

SIE Inc.

Technical Memo

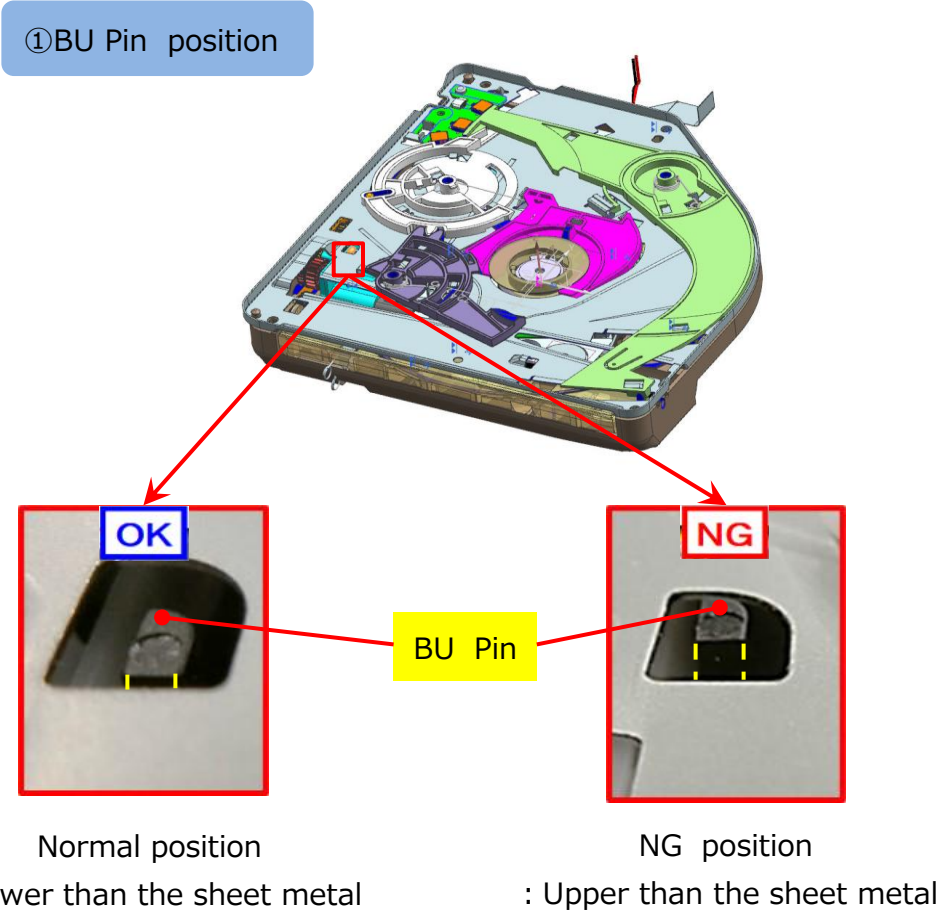
Approved by	Checked by	Drawn by
<div>SIE CS '21.03.23 Monden</div>		<div>SIE CS '21.03.23 Miyawaki</div>

Subject. “Unable to eject disc” pointed out about correspondence when arrival

Description. If the product arrives for repair due to "Unable to eject disc",
check the height of the BU regardless of whether it is reproduced or not.
If it is higher than the normal position, reassemble it.
If the BU position is high, it may recur at high temperatures.

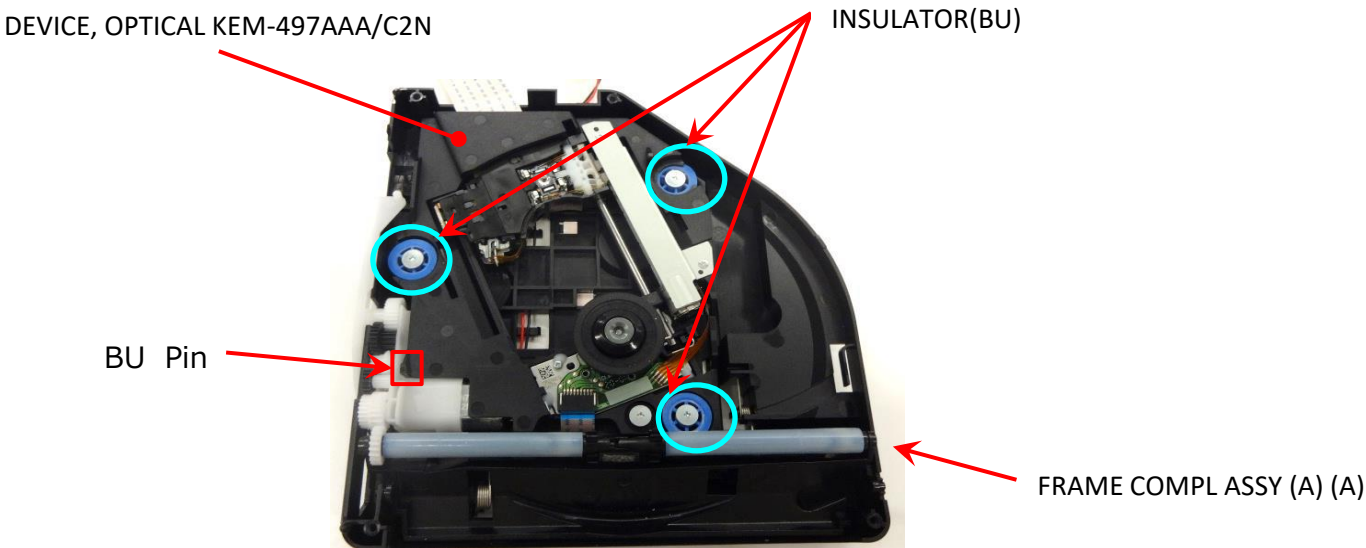
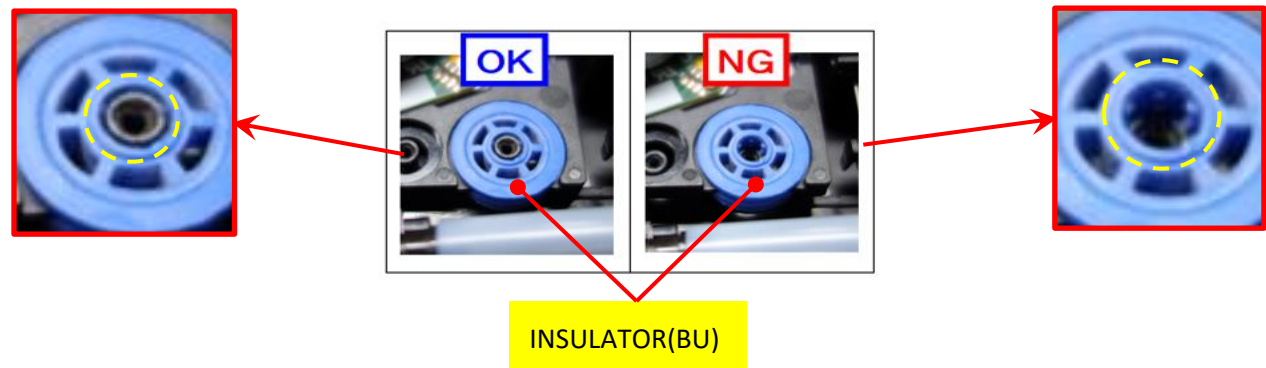
How to check, they are described below.

How to check the position of BU



②INSULATOR(BU) position

If the BU Pin position is high as shown in the above figure NG, the position of the insulator of the BU fixing part when the BU is fastened.
(Refer to the figure below) may also be NG, so please check and reassemble.
(The same applies to the other two locations)



[Parts]

S/C	Ref No.	Parts Number	Description	Remarks
S	4256	8-820-483-01	DEVICE, OPTICAL KEM-497AAA/C2N	
S	4257	A-5021-379-*	FRAME COMPL ASSY (A) (A)	
U	4251	5-018-642-01	INSULATOR(BU)	Qty:3pcs

For disassembly and assembly, refer to "RS-PS5-0013E".